



XT60 bulkhead connector trim

 **mrFixIt**

[VIEW IN BROWSER](#)

updated 6. 8. 2024 | published 6. 8. 2024

Summary

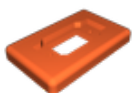
This is for XT60 bulkhead connector, it allows to mount the connector inset into the trim

[3D Printers](#) > [Accessories](#)

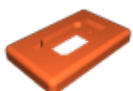
Tags: [xt60mount](#) [xt60connector](#)

This is for XT60 bulkhead connector, it allows to mount the connector inset into the trim. You can glue it to your surface or use sealant to mount it with screws.

Model files



xt60-bulkhead-inset.stl



xt60-bulkhead-inset.3mf

License

This work is licensed under a
Creative Commons (International License)



Public Domain

- ✓ | Sharing without ATTRIBUTION
- ✓ | Remix Culture allowed
- ✓ | Commercial Use
- ✓ | Free Cultural Works
- ✓ | Meets Open Definition