

## Ender 3 Extruder Chain Mount with Bowden Guide

 **scul**

[VIEW IN BROWSER](#)

updated 22. 6. 2022 | published 18. 12. 2021

### Summary

I liked @vampyrex13 's extruder chain mount, but wanted to have a Bowden Connector as well. Loaded both Vampyre's and...

[3D Printers](#) > [Accessories](#)

Tags: [cablechain](#) [ender3](#) [ender3pro](#)

I liked @vampyrex13 's extruder chain mount, but wanted to have a Bowden Connector as well.

Loaded both Vampyre's and @FullMetalFox 's extruder mounts into TinkerCAD, chopped the connector off Fox's and plopped it on Vampyre's. Indexed off the screw on the mount for the Z axis screw.

Did this for all 3 length variants that Vampyre made, although I've only printed the base length, which worked for my Ender3 Pro.

I printed [Ender 3 Cable Chain](#) by johnniewhiskey for my chain.

WIP due to threads for Bowden Connector are slightly off. Not sure if due to print orientation or something else. Still threads in, but is canted and almost looks cross threaded.

## Print Settings

### Printer Brand:

Creality

### Printer:

Ender 3 Pro

### Rafts:

Doesn't Matter

### Supports:

Yes

### Resolution:

0.2

### Infill:

40

### Filament:

Amazon Basics PLA

### Notes:

Printed as oriented in the screenshots, with supports blocked around the Bowden Connector and Z Axis chain connectors.

Category: 3D Printer Accessories

## Model files



**ender\_3\_extruder\_chain\_mount\_w\_bowden\_connector\_3mm.stl**

---



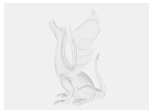
ender\_3\_extruder\_chain\_mount\_w\_bowden\_connector\_15mm .stl

---



ender\_3\_extruder\_chain\_mount\_w\_bowden\_connector.stl

## Other files



sources.txt

[Find source .stl files on Thingiverse.com](#)

## License ©



This work is licensed under a  
[Creative Commons \(4.0 International License\)](#)

**Attribution—Noncommercial—Share Alike**

---

- ✗ | Sharing without ATTRIBUTION
- ✓ | Remix Culture allowed
- ✗ | Commercial Use
- ✗ | Free Cultural Works
- ✗ | Meets Open Definition