



## Hookable Soap Tray for Shower Glass Panel



Pasty

[VIEW IN BROWSER](#)

updated 6. 8. 2024 | published 6. 8. 2024

## Summary

A Hookable Soap Tray to hook onto your Shower Glass Panel, or any other panel.

[Household](#) > [Bathroom](#)

**Tags:** [shower](#) [showeraccessories](#) [soapholder](#) [soapdish](#)  
[soaptray](#)

A 3-part Soap Tray for your shower glass panel. There are two different widths of hooks pre-exported and ready for download. Additionally, a Fusion 360 F3D file is available for you to customize with two parameters I set up for easy adjustments (Tolerance and Hookwidth).

## Printing Instructions:

### Parts and Orientation:

- Print the hooks on their side.
- Each hook has one completely flat side and one side with the tolerance removed. Ensure the correct orientation when placing them on the print bed.

## Recommended Print Settings:

- Layer Height: 0.2mm
- Perimeters: 3
- Support: Organic support

I printed it with Prusament PETG with 0,2 Tolerance both hooks are almost to lose, but gravity will hold it in place anyway :D

## Model files

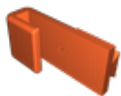


7mm width 0,2mm tolerance

2 files



left\_hook\_w7mm\_t02mm.stl



right\_hook\_w7mm\_t02mm.stl

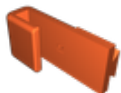


7mm width 0,1mm tolerance

2 files



left\_hook\_w7mm\_t01mm.stl



right\_hook\_w7mm\_t01mm.stl

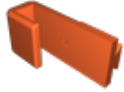


9,5mm width 0,2mm tolerance

2 files



left\_hook\_w95mm\_t02mm.stl



right\_hook\_w95mm\_t02mm.stl

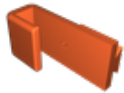


9,5mm width 0,1mm tolerance

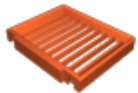
2 files



left\_hook\_w95mm\_t01mm.stl



right\_hook\_w95mm\_t01mm.stl



tray.stl

hookable\_soap\_tray.f3d

## License

This work is licensed under a  
**Creative Commons (4.0 International License)**



**Attribution**

- ✗ | Sharing without **ATTRIBUTION**
- ✓ | Remix Culture allowed

- ✓ | **Commercial Use**
- ✓ | **Free Cultural Works**
- ✓ | **Meets Open Definition**