

Holiday Chimney Card

B Brent_L

[VIEW IN BROWSER](#)

updated 18. 12. 2021 | published 18. 12. 2021

Summary

A holiday treat for your home and to share. The printed parts snap/slide together to create a charming scene with Santa



2.01 hrs



5 pcs



0.30 mm



0.40 mm



PLA



28 g



Prusa
MK3/S/S+

[Seasonal designs](#) > [Winter & Christmas & New Year's](#)

Tags: [card](#) [santa](#) [mail](#) [chimney](#)

I made this print to spread joy to my friends, coworkers, neighbors, and all others. I've included complete assembly instructions which also act as a mailing sheet when the parts are attached via "sticky dots" (which I purchased on Amazon.com). All the parts print flat and then snap together to form the scene. The assembly instructions include diagrams that show how and the proper sequence for assembly.

I used a paint pen to color the boots. The boots are elevated (thicker) to simplify the painting or to allow for a color change at layer.

I hope you enjoy it as much as I have in making this design. Please post your makes, I'd love to see them.

Model files



boots.3mf



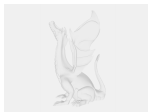
fireplace.3mf



hearth_front.stl



flame.stl



fire.stp



fireplace_side_right.stl



boots.stl



flame.3mf



mantel.stl



log.3mf



log.stl



stockings.3mf



fireplace_side_left.stl



fireplace_front.stl



stocking.stl



hearth.stl

Print files



boots_03mm_pla_mk3s_13m.gcode

🌀 PLA 🌀 0.40 mm ≡ 0.30 mm ⌚ 0.21 hrs ⚖️ 3 g 🖨️ Prusa MK3/S/S+



flame_03mm_pla_mk3s_8m.gcode

🌀 PLA 📏 0.40 mm ⚖️ 0.30 mm ⌚ 0.14 hrs 📊 2 g 🖨️ Prusa MK3/S/S+



fireplace_03mm_pla_mk3s_1h32m.gcode

🌀 PLA 📏 0.40 mm ⚖️ 0.30 mm ⌚ 1.54 hrs 📊 21 g 🖨️ Prusa MK3/S/S+



stocking_03mm_pla_mk3s_5m.gcode

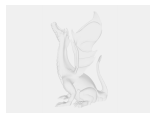
🌀 PLA 📏 0.40 mm ⚖️ 0.30 mm ⌚ 0.08 hrs 📊 1 g 🖨️ Prusa MK3/S/S+



log_03mm_pla_mk3s_2m.gcode

🌀 PLA 📏 0.40 mm ⚖️ 0.30 mm ⌚ 0.04 hrs 📊 1 g 🖨️ Prusa MK3/S/S+

Other files



assembly-instructions.pdf

License ©



This work is licensed under a
[Creative Commons \(4.0 International License\)](#)

Attribution

- ✗ | Sharing without ATTRIBUTION
- ✓ | Remix Culture allowed
- ✓ | Commercial Use
- ✓ | Free Cultural Works
- ✓ | Meets Open Definition

