



Xtool S1 2w 1064 Module Holder - HSW



Sam Schultz

[VIEW IN BROWSER](#)

updated 6. 8. 2024 | published 6. 8. 2024

Summary

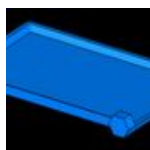
I didn't want to store my modules on a table or on their side so I remixed this a bit to fit the modules.

[Hobby & Makers](#) > [Organizers](#)

Tags: [laser](#) [honeycomb](#) [s1](#) [xtool](#) [honeycombstoragewall](#)
[hsw](#) [2w](#) [1064](#)

I didn't want to store my modules on a table or on their side so I remixed this a bit to fit the modules. Surprisingly there wasn't already a model made for this.

This remix is based on



125mm x 75mm tray with front lip w/small hex
attachment for the HSW

by [scooter_magavin](#)

Model files

xtool-s1-2w-1064-module-holder-hsw.step



xtool-s1-2w1064-module-holder-hsw.stl

License

This work is licensed under a
Creative Commons (4.0 International License)



Attribution—Noncommercial—Share Alike

- ✗ | Sharing without **ATTRIBUTION**
- ✓ | **Remix Culture** allowed
- ✗ | **Commercial Use**
- ✗ | **Free Cultural Works**
- ✗ | **Meets Open Definition**